

Rubber Impellers and Stators for Flotation Machines

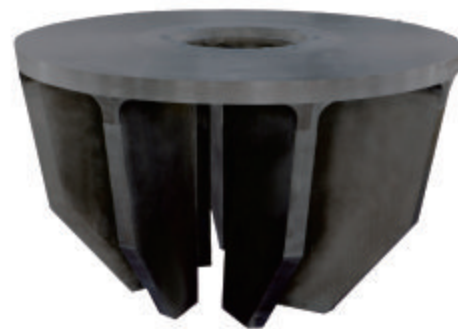
I. Preface

Naipu Company develops and manufactures rubber impellers and stators for flotation machines with fine material and advanced manufacturing process relying on the design of Beijing General Research Institute of Mining & Metallurgy. Major products are of those specifications from 50m³ to 320 m³.



II. Features and Characteristics

1. High equilibrium precision, smooth operation;
2. Stable performance, high abrasion resistance and corrosion resistance;
3. Simple structure, reasonable streamline;
4. Guaranteed flotation efficiency;
5. Light in weight, convenient installation and maintenance;
6. A full range of products available, especially middle-sized and large-sized ones: series KYF and XCF rubber impellers and stators for flotation machines as of 320 m³ (the largest around the world at present), 200m³, 160 m³, 130 m³, 100m³, 70m³, 50m³, etc..



Impellor for Flotation 320 m³



Stator and Impellor for Flotation 130 m³



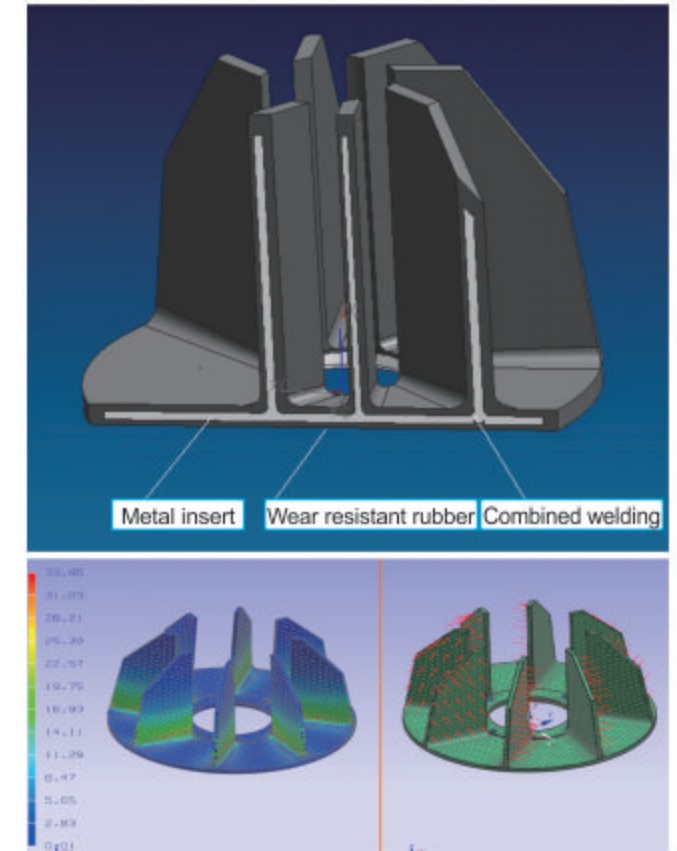
Stator for Flotation 320 m³

III. Design and Technology

1. Taking into the consideration of slurry direction and wear conditions, products are designed by using thick and thin rubber-filled blade to improve wear resistance performance of impellers and stators.

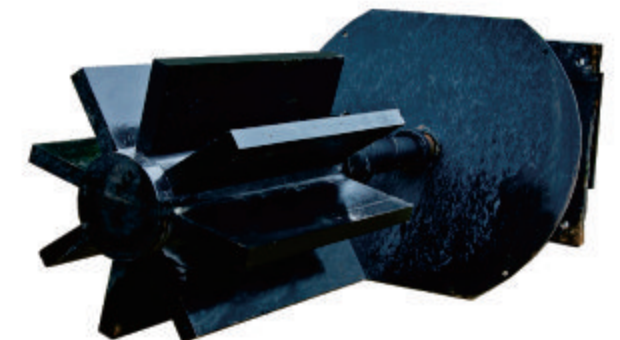
2. With initial products design completed, finite element analysis and wear analysis are conducted for optimization before a final design scheme is determined.

3. Impellers and stators for flotation machines mainly consist of metal inserts and wear resistant rubber. Metal inserts are of fabricated structure, with advanced flame cutting for material preparation, followed by accurate welding under strict process standard, and are also tested with a dynamic balancer for balance inspection so as to guarantee the strength and balance performance of the skeleton inserts for the products.



IV. A Reference List

1. Jinchuan Group, Gansu: KYF-50 flotation machines;
2. Dongguashan Copper, Tongling Non-ferrous Metals, Anhui: WEMCO-130 flotation machines;
3. Erdenet Concentrator, Mongolia: WEMCO-130 flotation machines;
4. Wunugetu Mountain Cu&Mo, China National Gold Group: KYF-160 flotation machines;
5. Dashan Concentrator, Dexing Copper, JCC: KYF-200, KYF-160, KYF-70 flotation machines;
6. Sizhou Concentrator, Dexing Copper, JCC: KYF-130 flotation machines;
7. Peru program of Chinalco Group: KYF-320 flotation machines.



Impellers and Stators for Flotation Machines



Global Cooperation Jointly Shared Future



Product Introduction

Add: No. 4 Industrial Rd., Shangrao Economic Development Zone

Zc: 334100

Tel: 86-793-8457309 8469669

Fax: 86-793-8461032

http: www.naipu.com.cn E-mail: naipu@naipu.com.cn

 **JIANGXI NAIPU MINING MACHINERY AND NEW MATERIALS CO., LTD**
[HTTP://WWW.NAIPU.COM.CN](http://www.naipu.com.cn)